

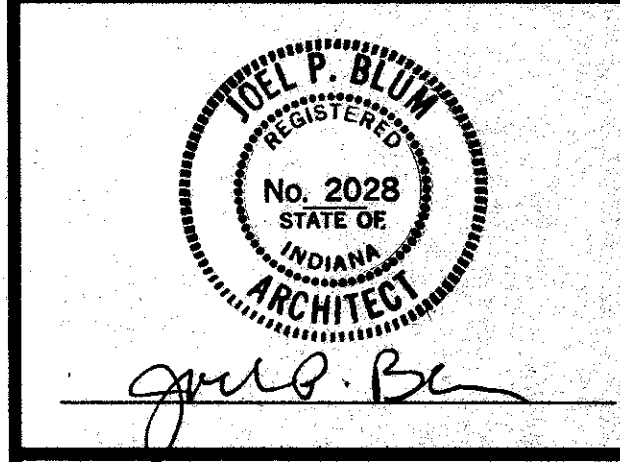
KEY NOTES:

1. Downspout - see wall sections and specifications
2. Control joint - see (A3.3)
3. 10" high cast anodized aluminum letters
4. 8"x8" stone block
5. Aluminum louver
6. Existing face brick (Base Bid), verify
7. New face brick (Base Bid), verify
8. Stone band
9. Rowlock course
10. Black 8"x8" @ 7'-4" above main level. Location shall be verified with Architect
11. Exterior electrical outlet - see Electrical drawings
12. Hose bib locations - see Plumbing drawings
13. Soldier course with stone corners

The InterDesign Group, Inc.
 141 East Ohio Street
 Indianapolis, Indiana 46204
 317/263-9655 Fax 317/263-9644

Goshen Public Library
Addition & Renovation
 601 South Fifth Street Goshen, Indiana
Building Elevations

Mark	Revision

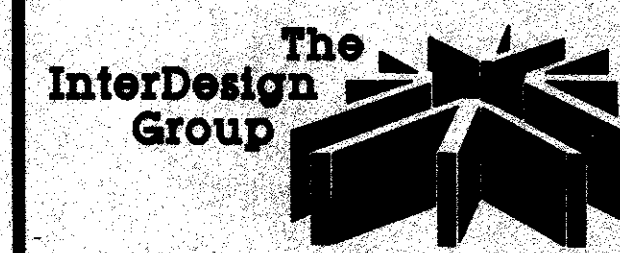


Dwn By **CSM** Chkd By **CSM**
 Date **August 19, 1993**

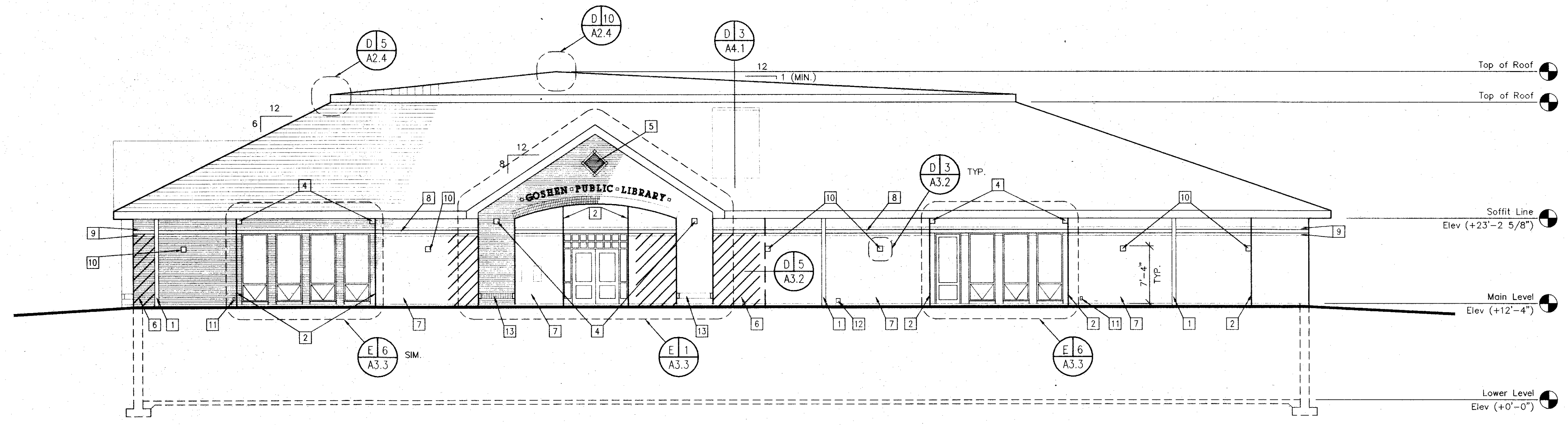
These drawings are the property of the Architect and are not to be reused or reproduced without his written permission.

Project Number **921030**
 Sheet Number

A
3.1

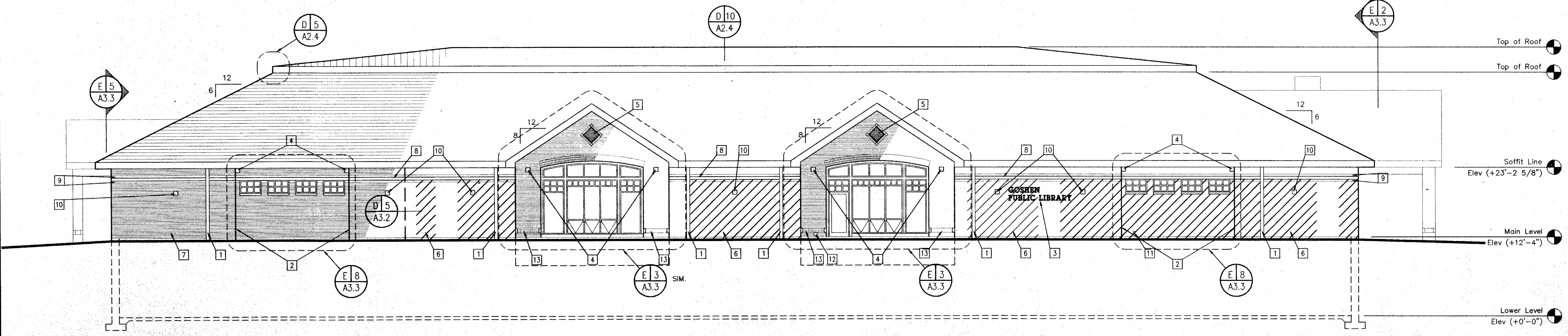


Total Architectural Development



PURL ST. ELEVATION (NORTH)
 SCALE: 1/8" = 1'-0"

(E 1 A3.1)



FIFTH ST. ELEVATION (EAST)
 SCALE: 1/8" = 1'-0"

(E 2 A3.1)