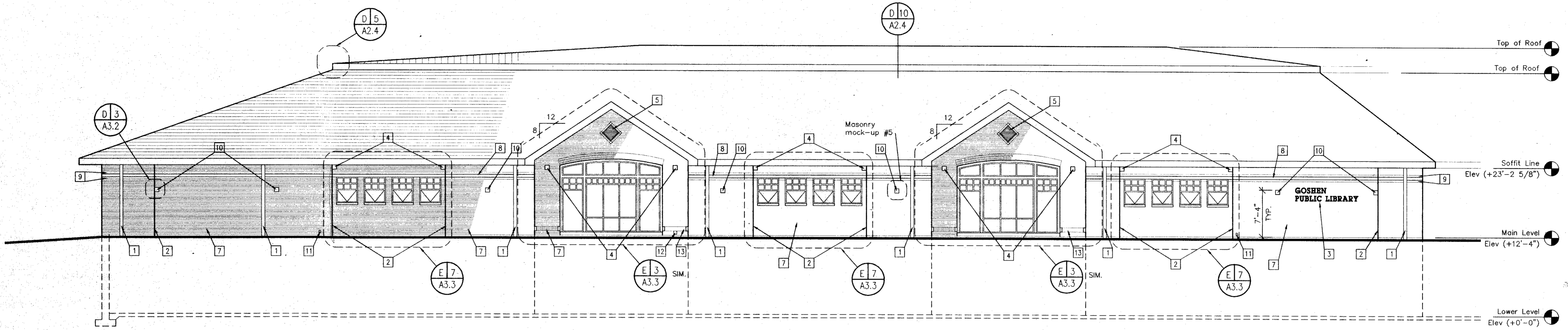


- KEY NOTES:**
1. Downspout - see wall sections and specifications
  2. Control joint - see (A3.3)
  3. 10" high cast anodized aluminum letters
  4. 8"x8" stone block
  5. Aluminum louver
  6. Existing face brick (Base Bid), verify
  7. New face brick (Base Bid), verify
  8. Stone band
  9. Rowlock course
  10. Black 8"x8" @ 7'-4" above main level. Location shall be verified with Architect
  11. Exterior electrical outlet - see Electrical drawings
  12. Hose bib locations - see Plumbing drawings
  13. Soldier course with stone corners

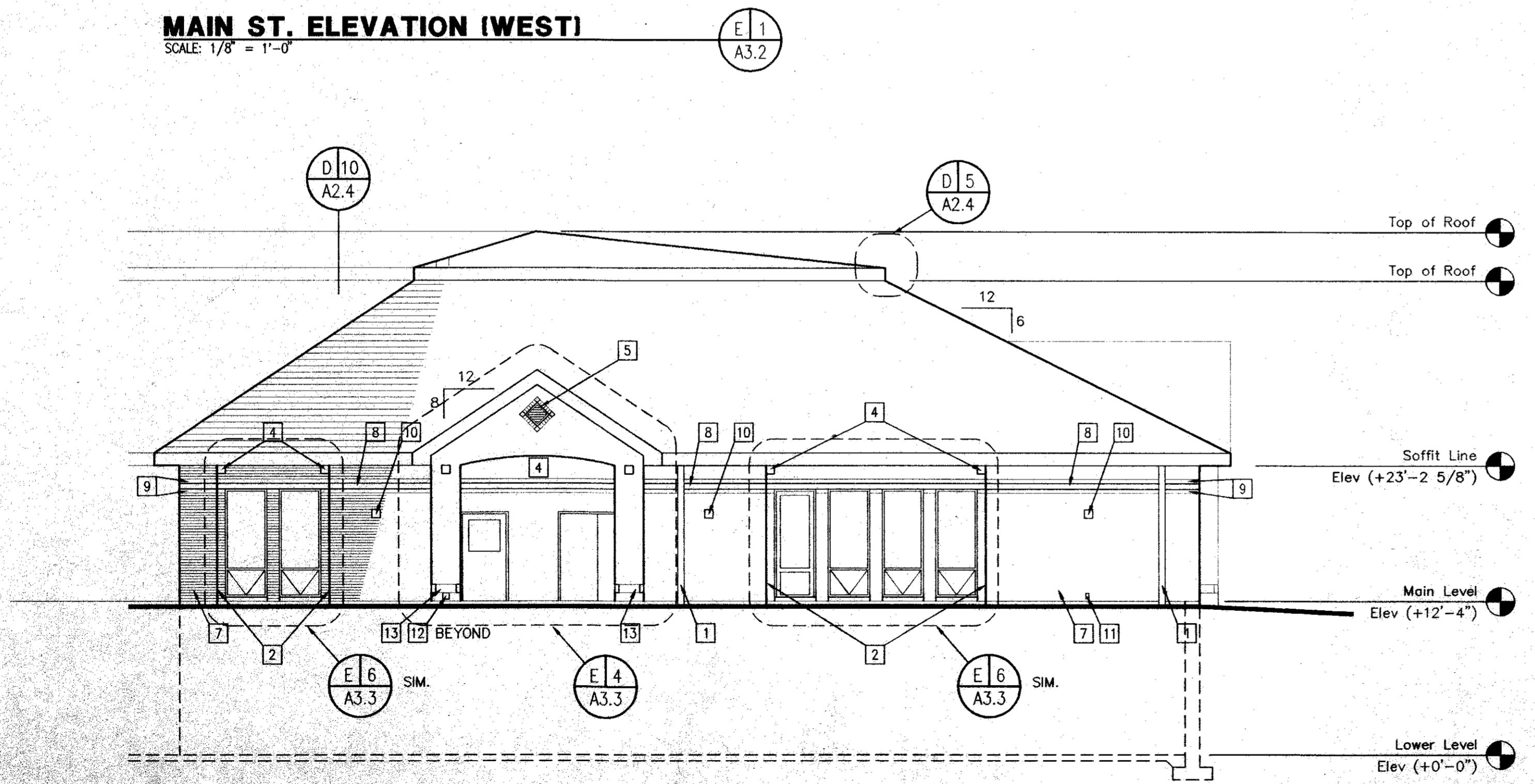
The InterDesign Group, Inc.  
 141 East Ohio Street  
 Indianapolis, Indiana 46204  
 317/263-9655 Fax 317/263-9644

**Goshen Public Library  
 Addition & Renovation**  
 601 South Fifth Street Goshen, Indiana

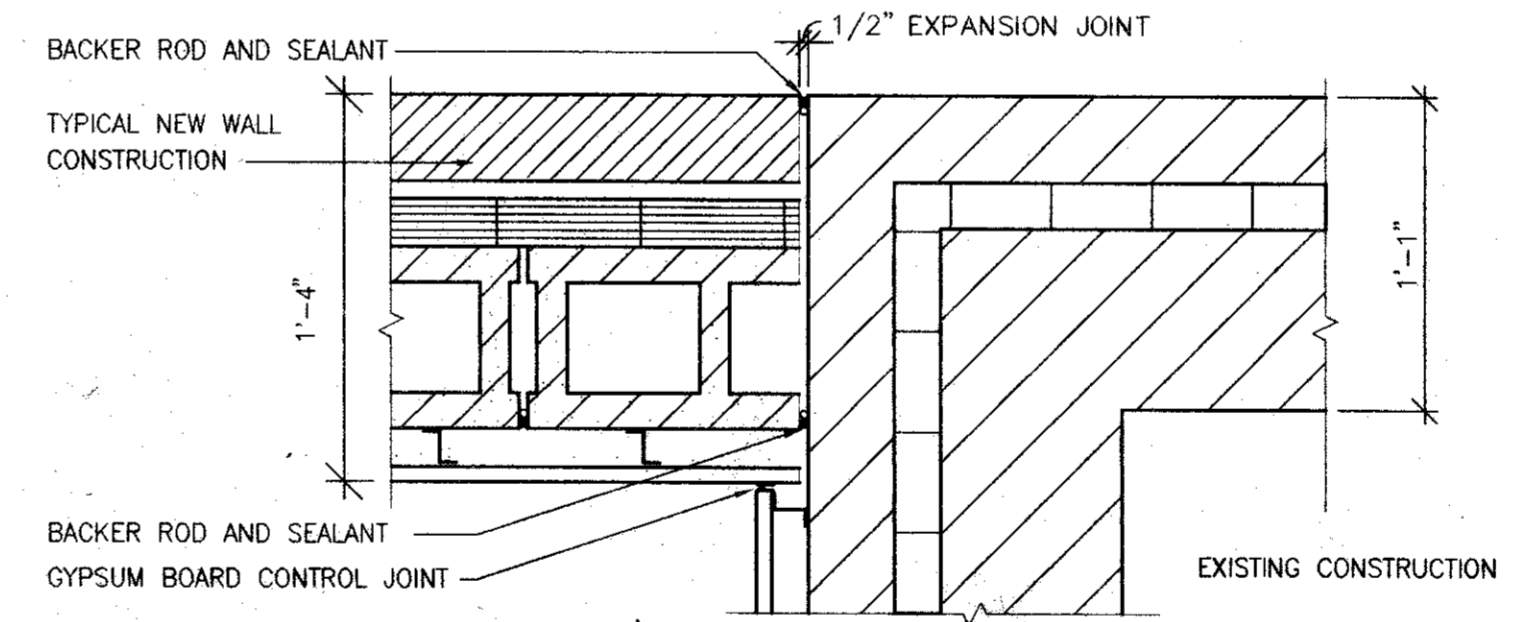
**Building Elevations**



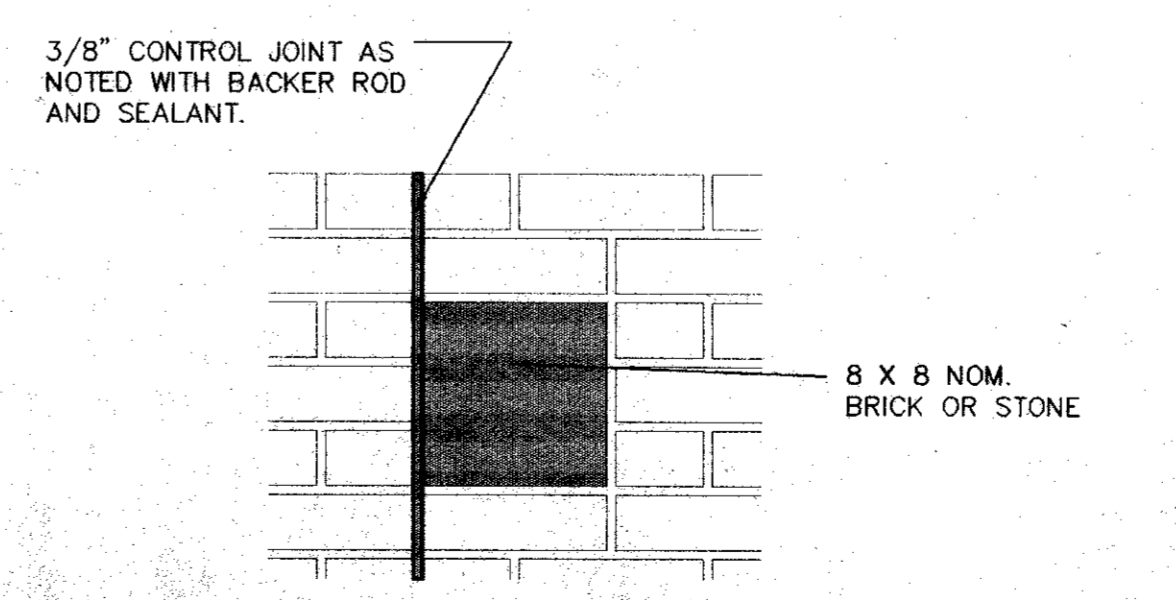
**MAIN ST. ELEVATION (WEST)**  
 SCALE: 1/8" = 1'-0"



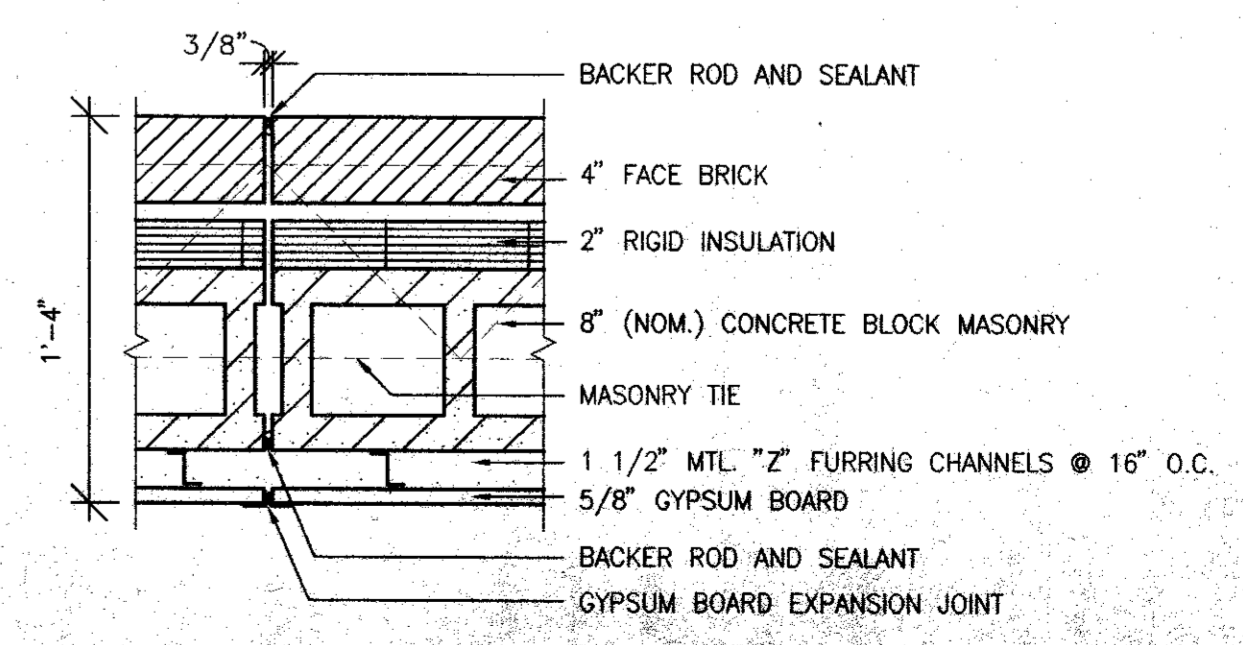
**SOUTH ELEVATION**  
 SCALE: 1/8" = 1'-0"



**EXPANSION JOINT DETAIL**  
 SCALE: APX. 1 1/2" = 1'-0"



**DETAIL AT CONTROL JOINT**  
 SCALE: APX. 1 1/2" = 1'-0"



**TYPICAL CONTROL JOINT**  
 SCALE: APX. 1 1/2" = 1'-0"

Mark	Revision

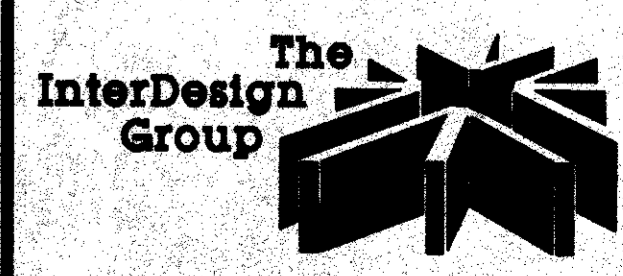


Dwn By **CSM** Chkd By **CSM**  
 Date **August 19, 1993**

These drawings are the property of the Architect and are not to be reused or reproduced without his written permission.

Project Number **921030**

Sheet Number  
**A 3.2**



Total Architectural Development