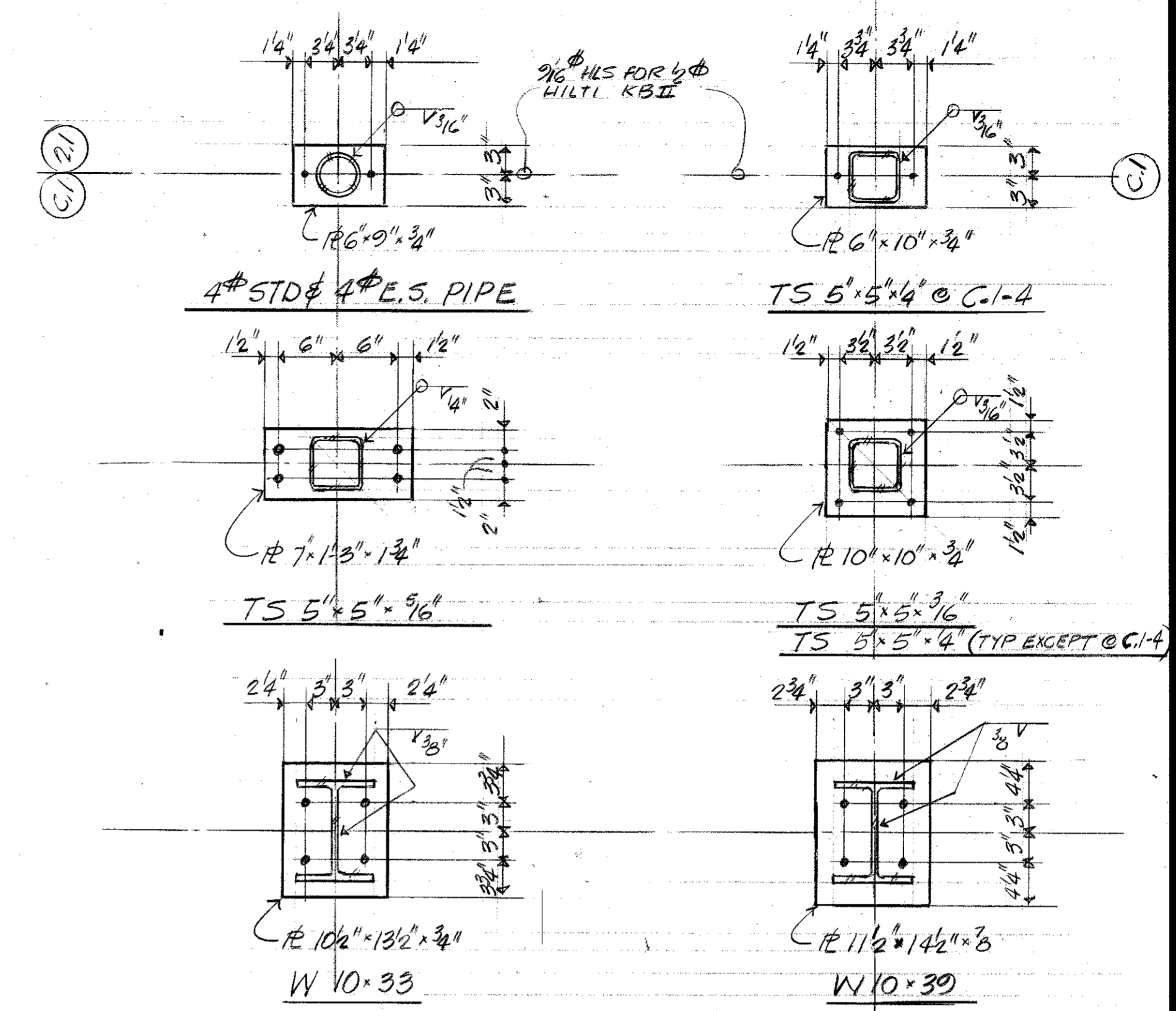
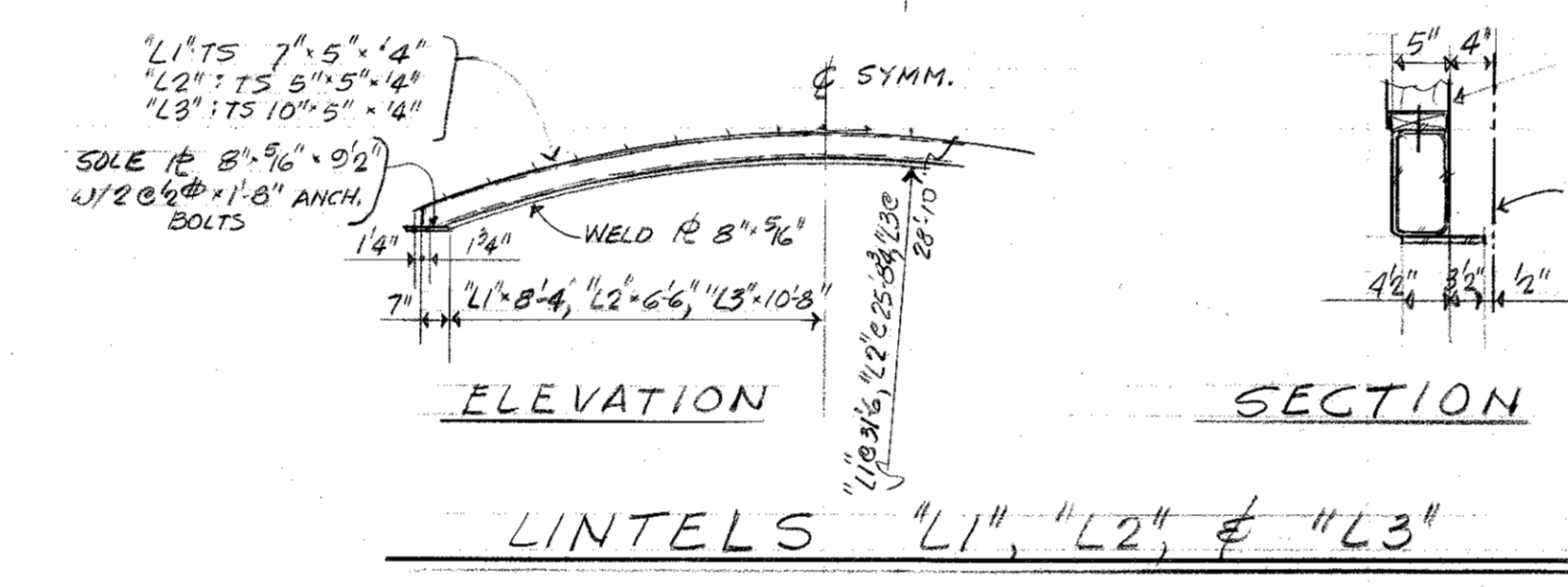
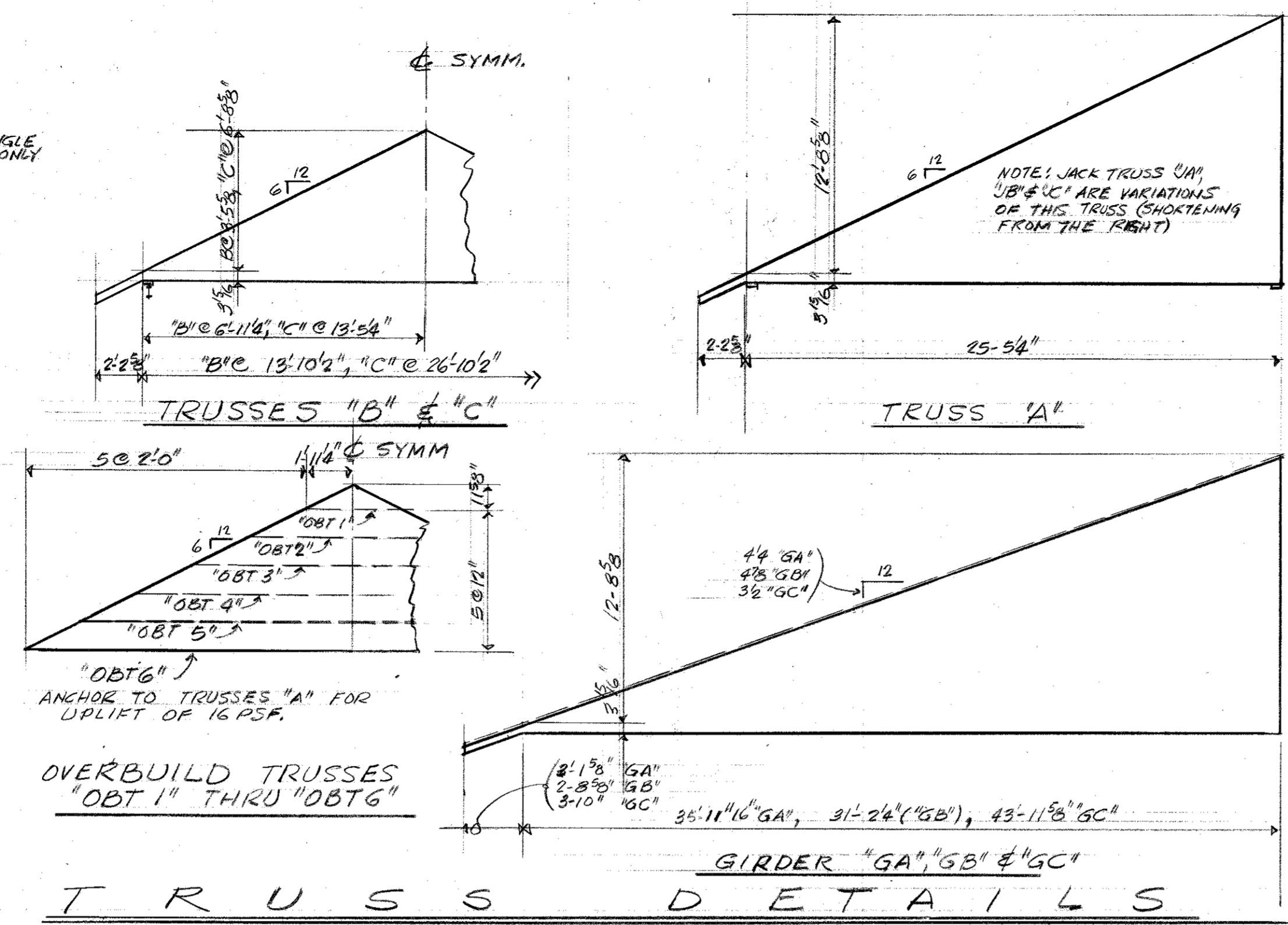


VIEWS TAKEN LOOK FROM EAVE (UP) HIP BEAMS AND TOWARD THE SOUTH ALONG GRIDS (A) & (C)

LAMINATED BEAM DIMENSIONS							
MARK	A	a	B	b	c	NS	NN
A	3 3/8	5/16	3/8	5/16	-	-	-
B	3 1/2	3/16	1/2	1/16	-	-	-
C	3 1/8	3/8	1 1/16	1/8	-	-	2 1/2 (W/ES)
D	3 1/16	3/8	1 1/16	1/8	-	-	-
E	-	-	-	-	1/16	-	-
F	-	-	-	-	3/16	1 3/8	1 1/2
G	-	-	-	-	1/2	-	-
H	-	-	-	-	7/16	1 1/2	-
I	2 1/16	5/16	2 1/16	3/16	-	-	1 3/8
J	2 3/8	5/16	2 3/8	7/16	-	-	-
K	2 3/16	3/8	2 7/16	5/16	-	1 3/16	1 1/2
L	2 3/16	3/8	2 3/16	3/16	-	-	-



ALL HOLES NOT OTHERWISE NOTED SHALL BE 3/16\"/>

The InterDesign Group, Inc.
141 East Ohio Street
Indianapolis, Indiana 46204
317/634-8477

KENT D. PIERCE, P.E.
Consulting Structural Engineer
49 Timber Lane • Brownsburg, Indiana 46112
317/852-4702

Goshen Public Library
Addition & Renovation
601 South Fifth Street Goshen, Indiana

Mark	Revision

Date AUGUST 19, 1993

These drawings are the property of the Architect and are not to be reused or reproduced without his written permission.

Project Number 921030

Sheet Number

55

